



# **EON-XR 9.0 Features Part 3**

**Basic Features: Login to the Platform, Annotation, Explode, Transparency, Slicing Plane, Disassemble & Snap, Real Time Shadows, PBR Visual**

**Watch the presentation with videos**

**[CLICK HERE](#)**

# EON-XR Features & Functionality

## LEARNING

### PLATFORM

•CLOUD-BASED: Develop, Run, Manage, Access, Store, Host & Distribute XR

•AGNOSTIC: Support for 30+ devices across Mob VR/AR(android, IOS), Desktop, HMD (Oculus Rift S, HTC Vive), AR device (Magic leap, HoloLens)

### ASSETS & LIBRARY

•VAST ASSET LIBRARY: Access to more than 1 million 3D models and 360°  
•UPLOAD OWN 3D/360 ASSETS: CAD /PLM/Scan model, BIM etc.

### CONTENT CREATION

•CREATE & SHARE 3D & 360 APPS: Easy, Do it yourself; Intuitive, No programming based

- Create3D/360 annotation
- Memos
- Videos
- Explode
- Transparency
- Identify
- Locate
- Quiz
- Environments - 3D playback
- Breadcrumbs
- Physics
- Animation
- If/then programming

•3D RECORDING TOOL: Multiple 3D recording for Standard Operation Procedure or guidance  
•SEARCH ASSISTED APPLICATION CREATION: Faster & easier to create rich XR content SERP

### CONTENT EXPERIENCE

- EXPERIENTIAL LEARNING: Guided and Do it yourself mode
- EXPERIENCE 3D & 360 LESSONS
- OFFLINE MODE: Download applications to your Own device
- LIFE SIZE AR: Enables exploration and interaction with large environments scale 1 to 1, AR marker less
- DIGITAL TWIN: Side by side or superimposed AR Instructions
- OFFLINE MODE

### REMOTE & MULTIUSER

- REMOTE ONLINE XR: Groups interact virtually online with no risk of physical exposure
- MULTI-USER SESSIONS: One-to-many Trainer to Trainee Learning Modules

## ADMIN

•INSTITUTION: In a private institution, students & teachers share access to the same group, content library, and share data & interactions. A one-time setup fee is also required

- PUBLIC OR PRIVATE: Determine who can share, access distribute & assign to groups XR Apps, 3D/360 libraries
- USER MANAGEMENT: Assessment, Analytics User Profiles, Login, LMS Integration
- CONTENT MANAGEMENT: Integration with LMS, IoT, AI & CMS
- ASSIGN & DISTRIBUTE LESSONS

•3D ASSESSMENT TOOL: Virtual assessment track & assess user performance with final score report

### •TRACK & ASSESS STUDENT PERFORMANCE

## TRAIN

•TRAINING MODULE: Procedure Practice, Remote Training, Virtual Certification

- 3D recording
- 3D playback
- 3D assessment
- Remote AR
- LMS environment
- Voice
- Avatar
- Breadcrumbs - name and identif

•MULTI-USER: Support For 1-1 Or 1-Many Training

•MULTI-PLATFORM: Cross Platform VR Training

•INTEGRATED COMMUNICATION: Voice over IP built in

•GUIDANCE AND ASSESSMENT: Step-by-step instructions for task completion and integrated assessment

•VIRTUAL PROCEDURE ASSESSMENT

•SEARCH ASSISTED LESSON CREATION

•HOST MULTI-USER REMOTE SESSIONS

•ASSIGN & DISTRIBUTE LESSONS

•TRACK & ASSESS STUDENT PERFORMANCE

•EXPERIENCE 3D & 360 LESSONS

## PERFORM

•PERFORMANCE MODULE: AR Assist MRO, Remote Expert Assist, RT Data Display

- Persistent tracking
- Scanning 3D/360
- Automatic annotation
- AI Google Glass
- Memo text-to -speech, voice-to-text scraping
- Multi-user breadcrumbs - AR and real objects with symbols
- Video real time remote
- 3D (?) map
- Standard operation procedure sequence IoT and sensors

•MULTI-USER: Support for operation manager and multiple workers

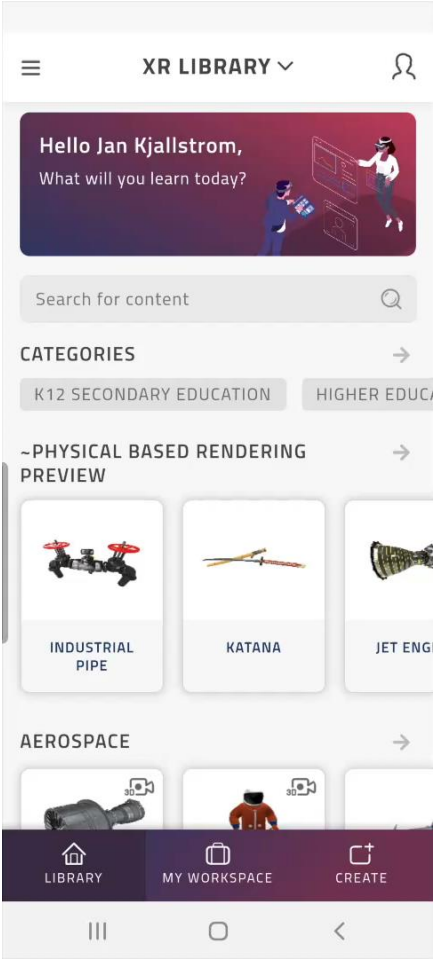
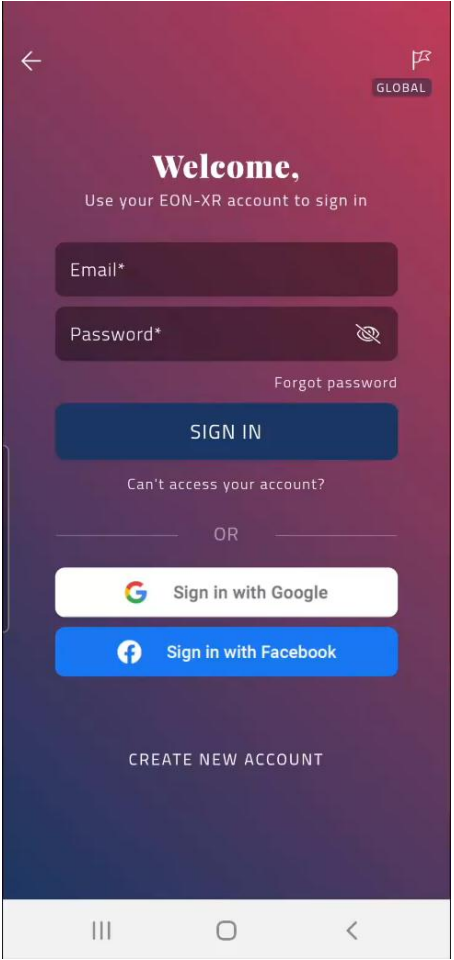
•MULTI-PLATFORM: Users (Phones, Tablets, Wearables)

•KNOWLEDGE MARKERS: AR Anchor Point Placement and Annotated with text, voice, video, 3D data

A person is shown in profile, wearing a VR headset. The image has a red overlay and a blurred cityscape background. The text "Login to the Platform" is centered in the middle of the image.

# Login to the Platform

# Login

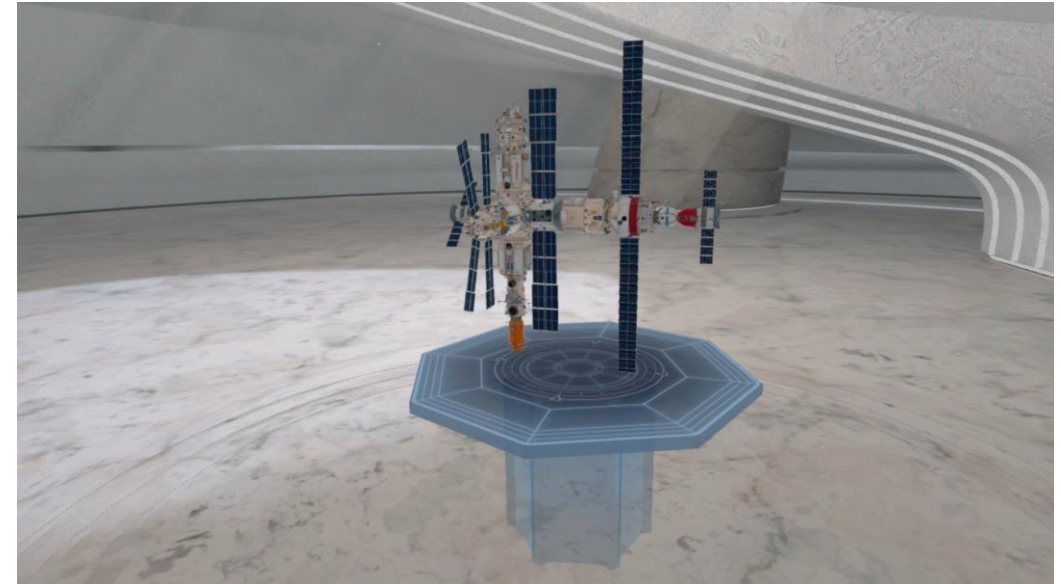
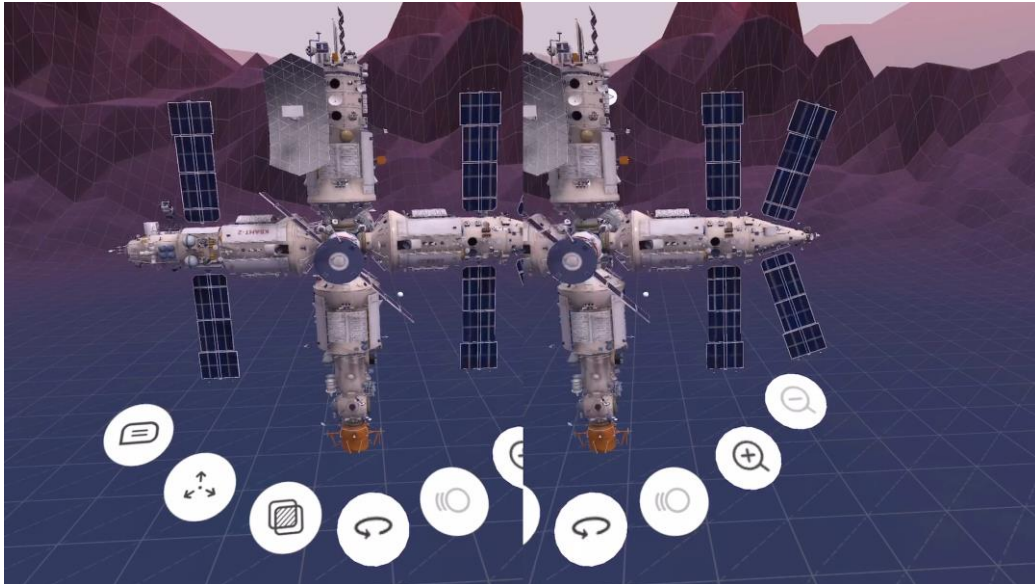
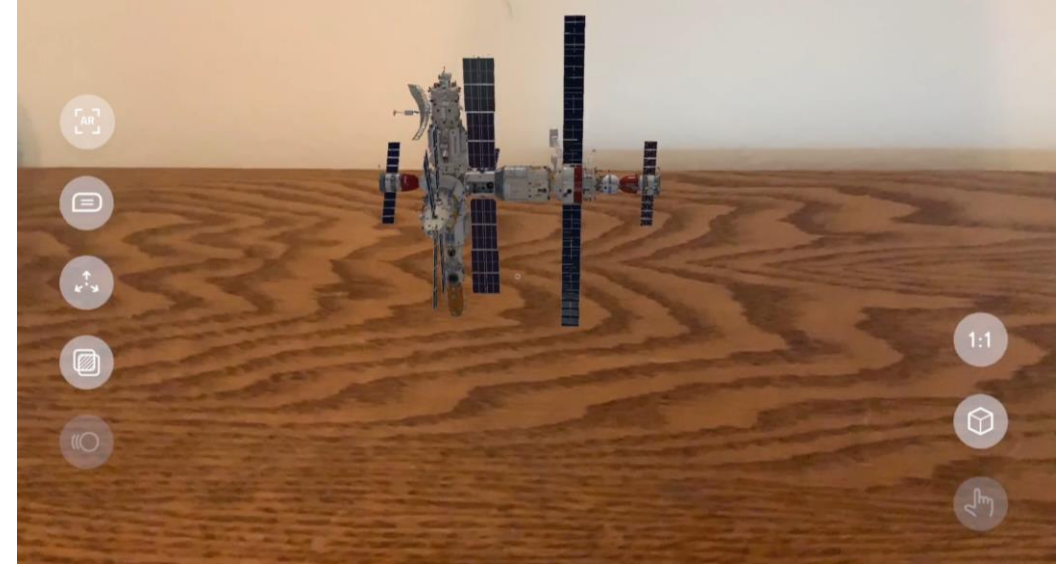
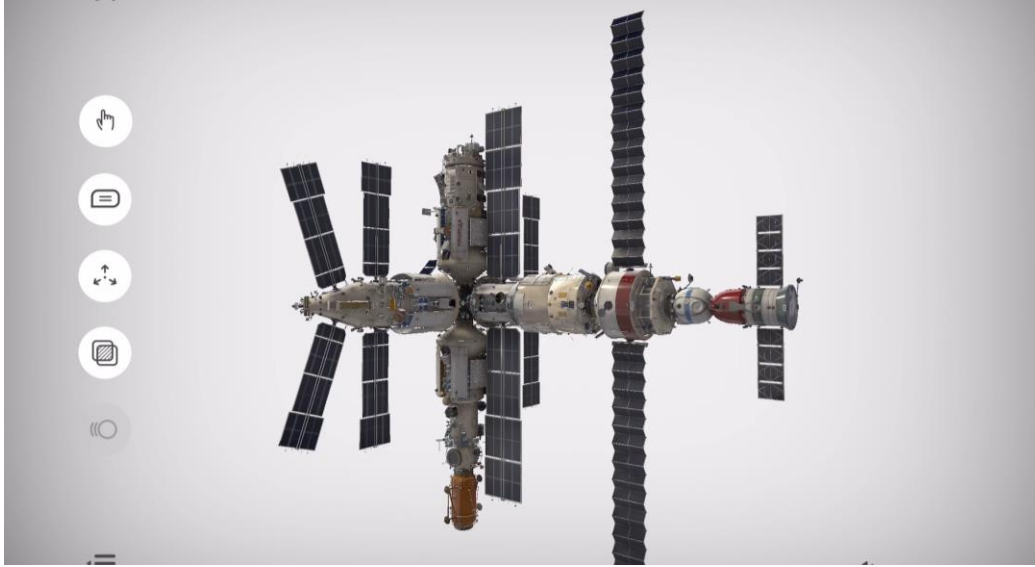






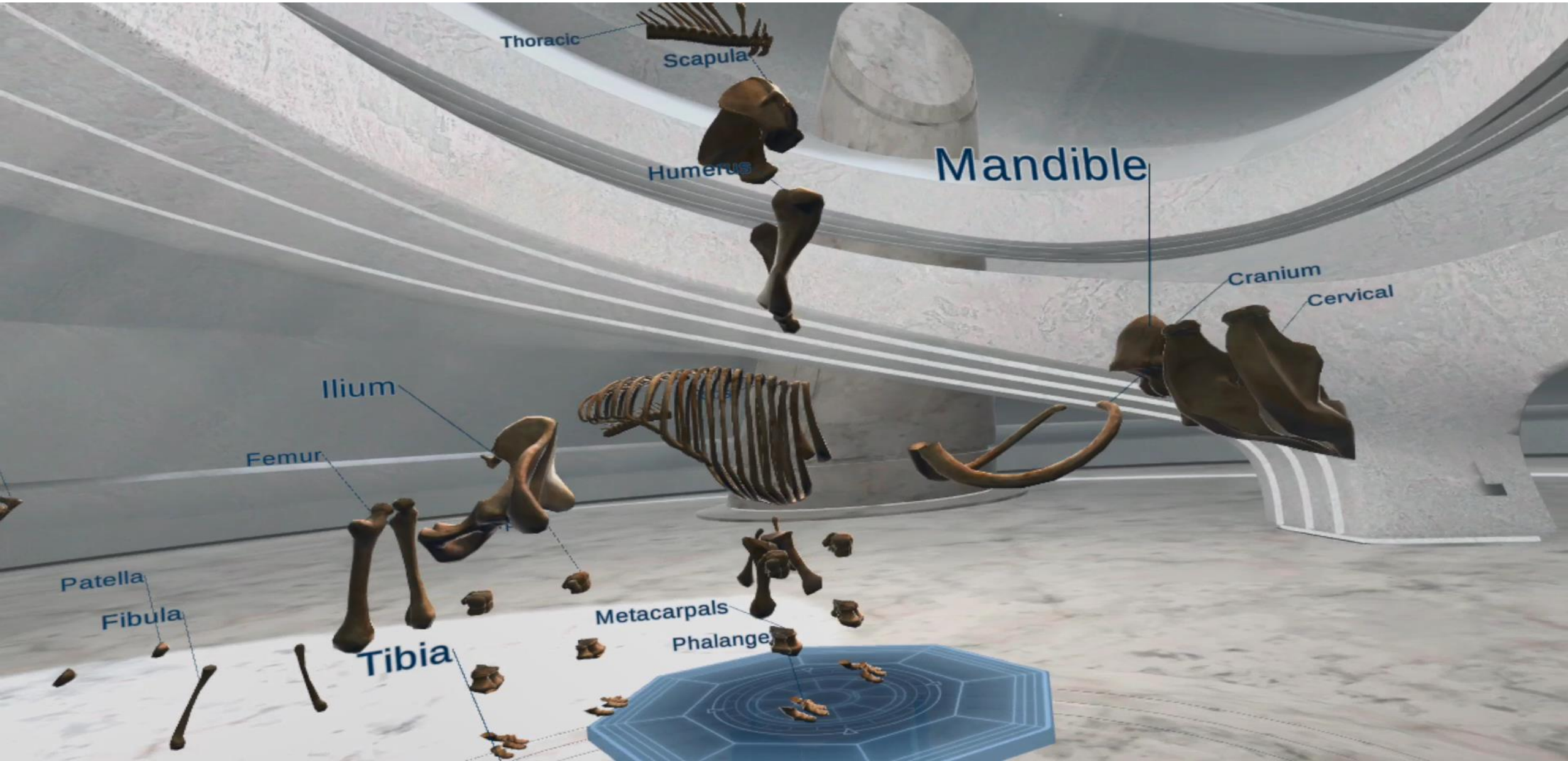
# Annotation

# Annotation





# New 3D Annotations

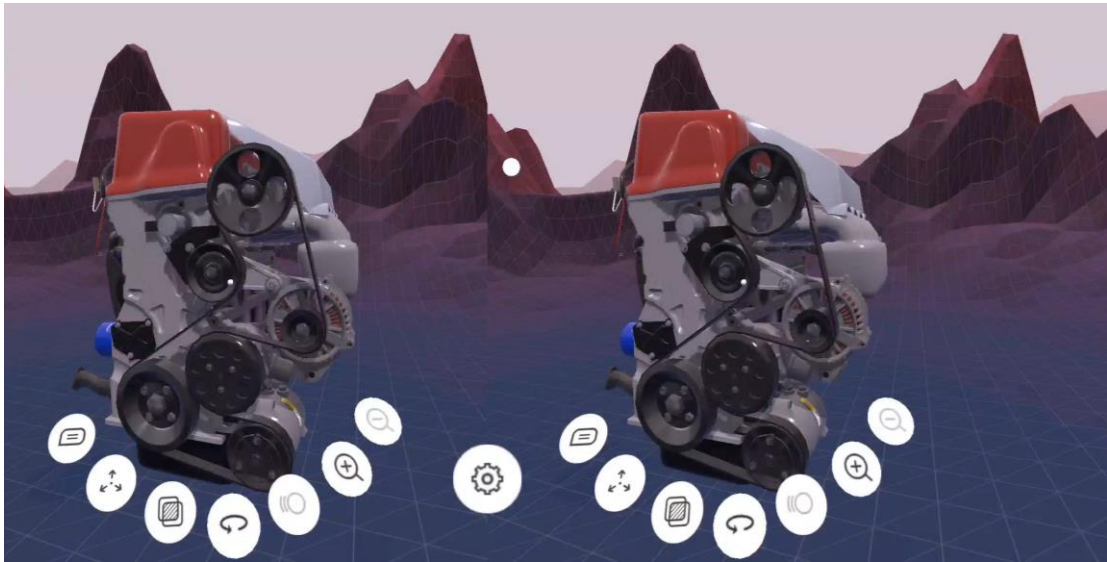


A person is shown in profile, wearing a VR headset. The image has a strong red color overlay. In the center, the word "Explode" is written in a white, serif font. The background is a blurred cityscape.

# Explode



# Explode





# Transparency



# Transparency

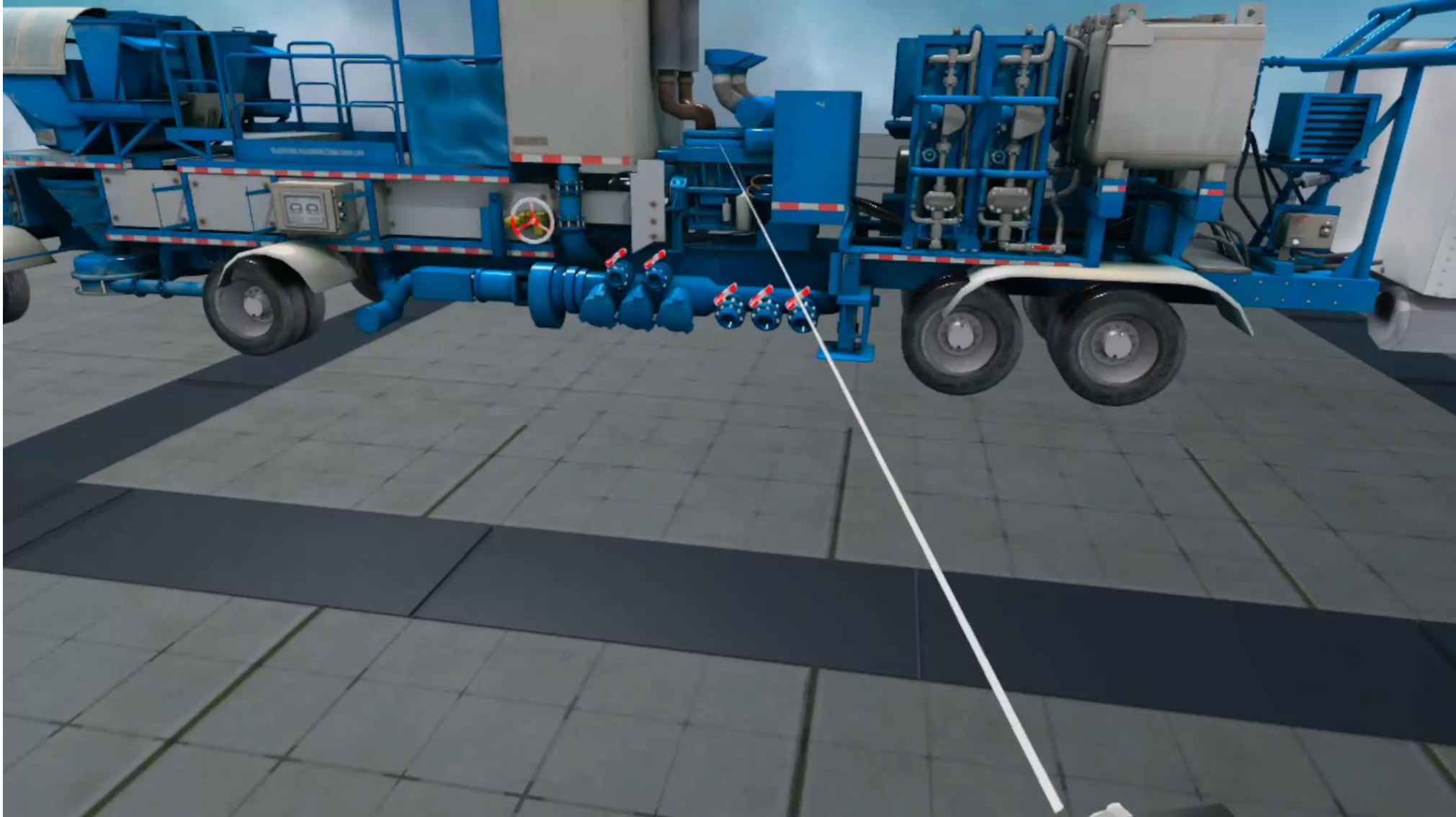






# Slicing Plane

# Slicing Plane



# Exploratory Interactive Tools







# Disassemble & Snap

# Disassemble & Snap

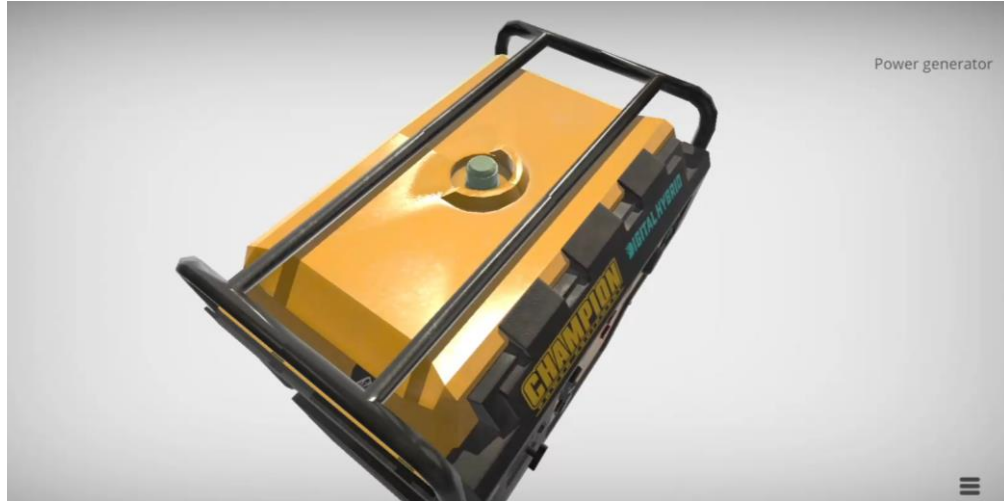




# Real Time Shadows



# Real Time Shadows





# PBR Visual Quality

# PBR Visual Quality

