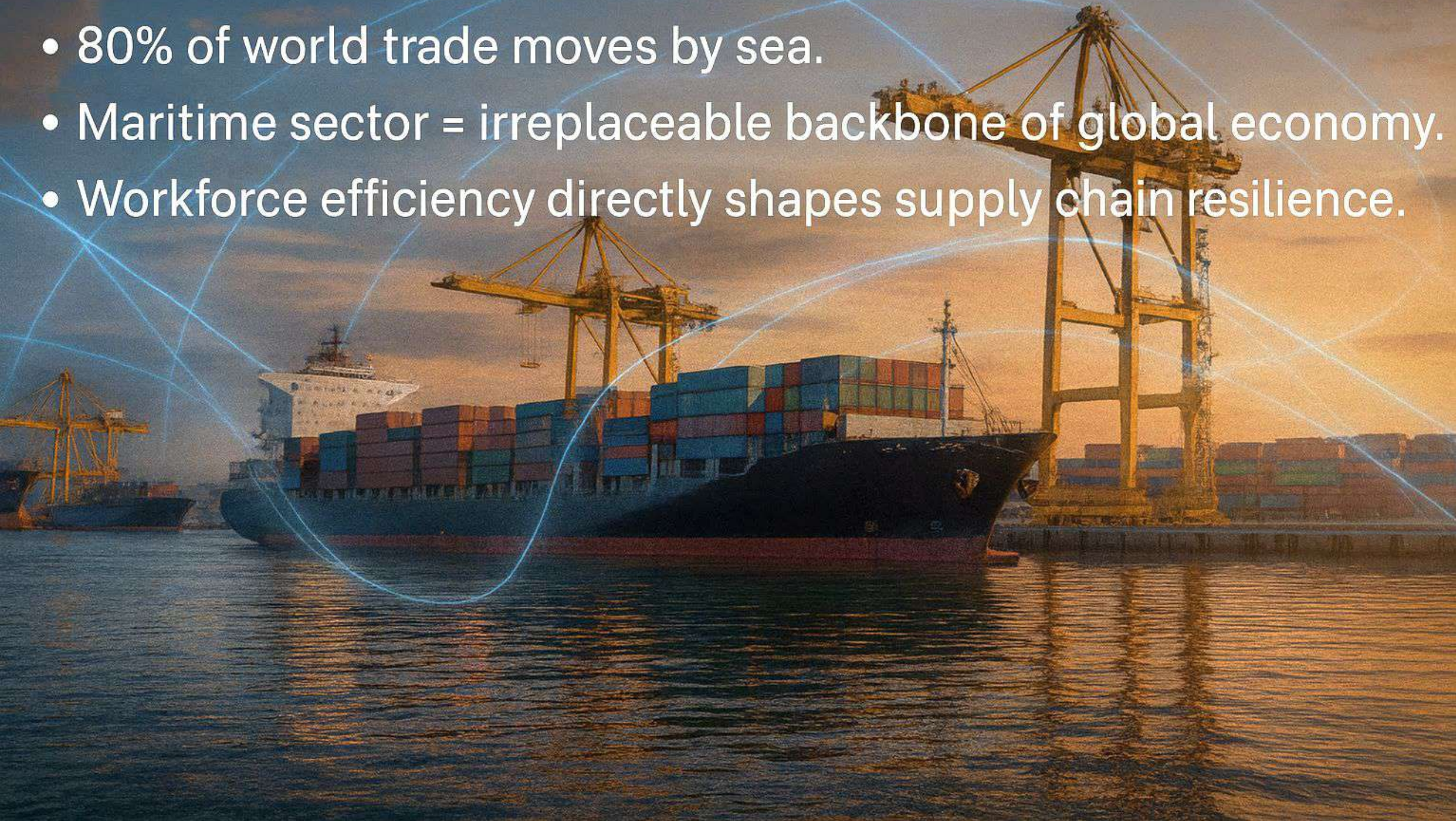


THE GLOBAL LIFELINE OF TRADE

- 80% of world trade moves by sea.
- Maritime sector = irreplaceable backbone of global economy.
- Workforce efficiency directly shapes supply chain resilience.



The Bottleneck Crisis

- Port congestion costs millions per day.
- High-consequence safety risks demand zero tolerance.
- Workforce shortages as veteran mariners retire.



The Throughput Imperative

- Every hour of vessel delay = major financial loss.
- Operator proficiency determines port velocity.
- Training quality = key to supply chain reliability.

MOVES PER
HOUR

Every hour of vessel delay = major financial loss.
Operator proficiency determines port velocity.

High-Stakes Safety at Sea

- Every hour of vessel world's most hazardous workplaces
- Catastrophic incidents: loss of life, cargo, and environmental disasters
- Immersive training prepares crews for fire, flooding, and abandon ship

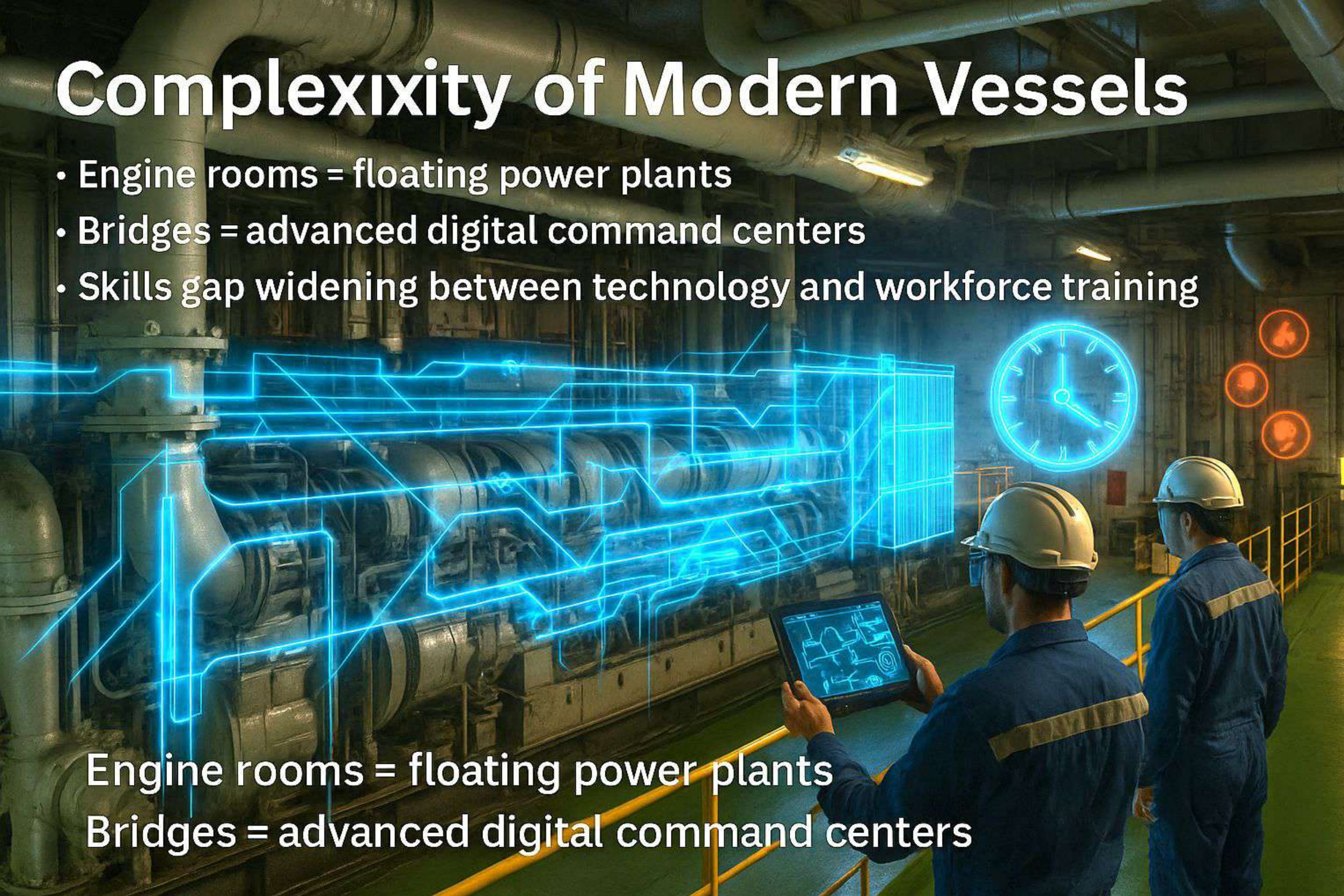
A timeline road stretching across crew simulation



Complexity of Modern Vessels

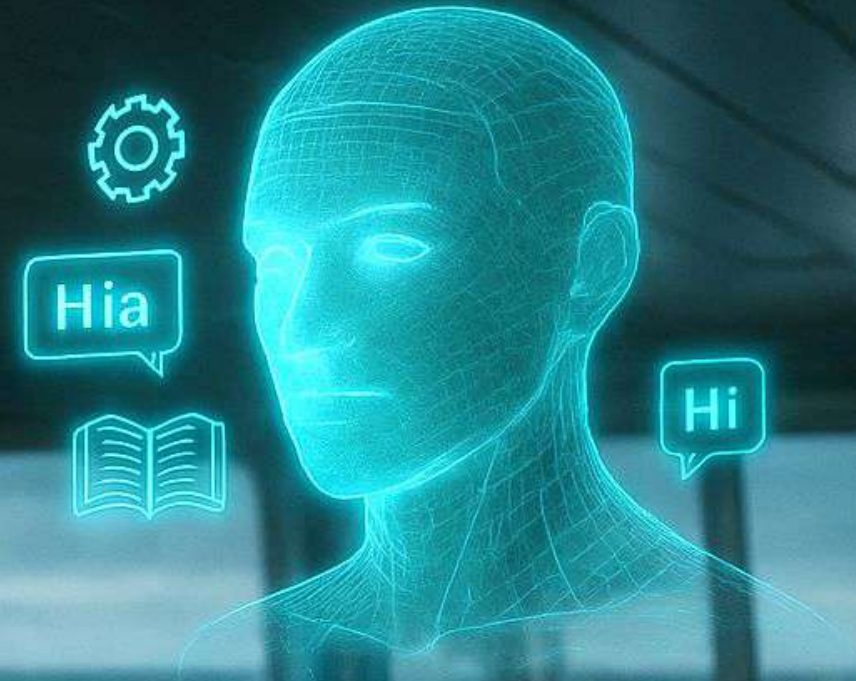
- Engine rooms = floating power plants
- Bridges = advanced digital command centers
- Skills gap widening between technology and workforce training

Engine rooms = floating power plants
Bridges = advanced digital command centers



The Crewing Challenge

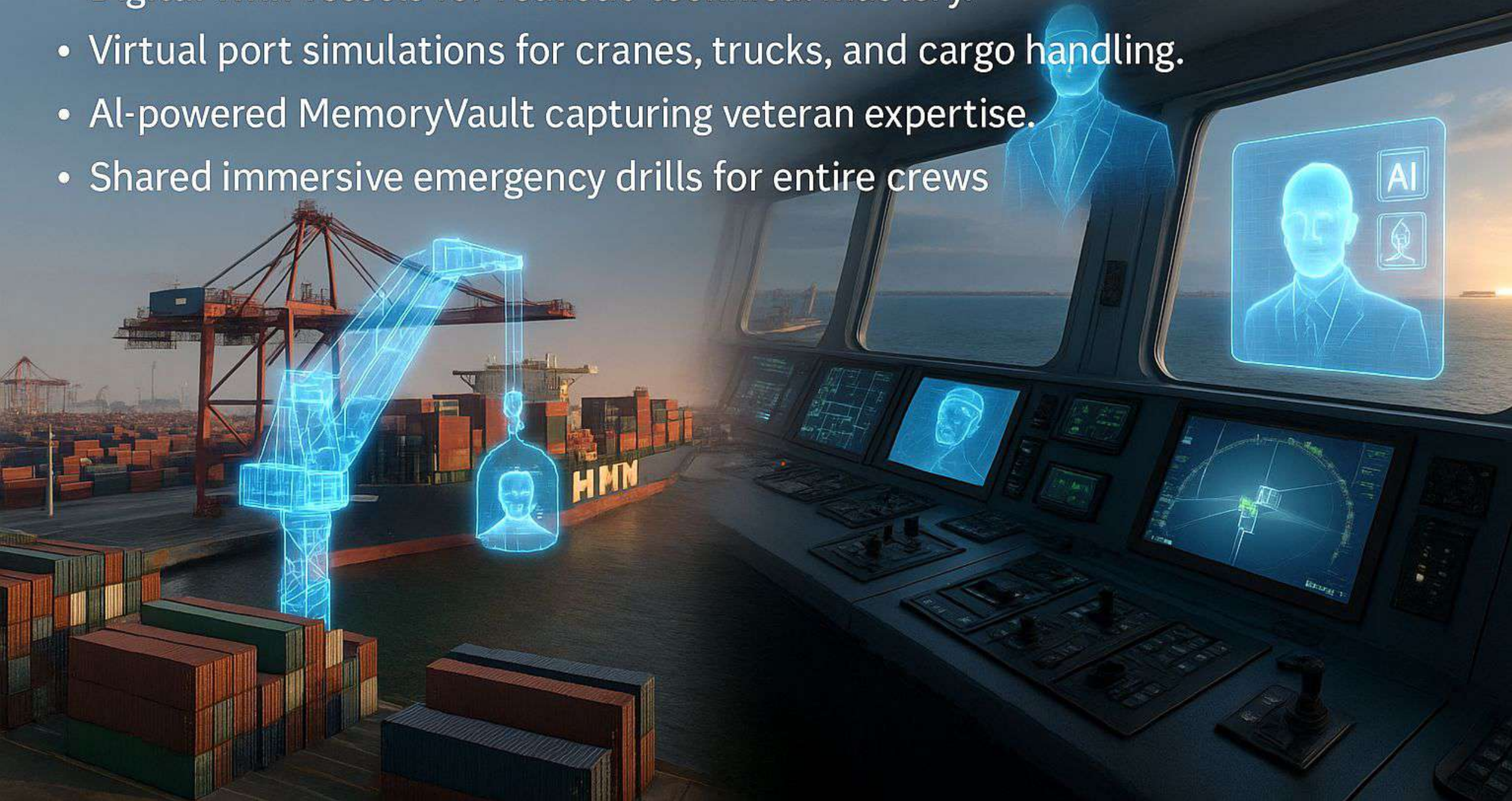
- Global, multicultural workforce = uneven training standards.
- Retiring officers = knowledge vacuum.



- Retiring officers = knowledge vacuum.
- Need for consistent, scalable crew competence.

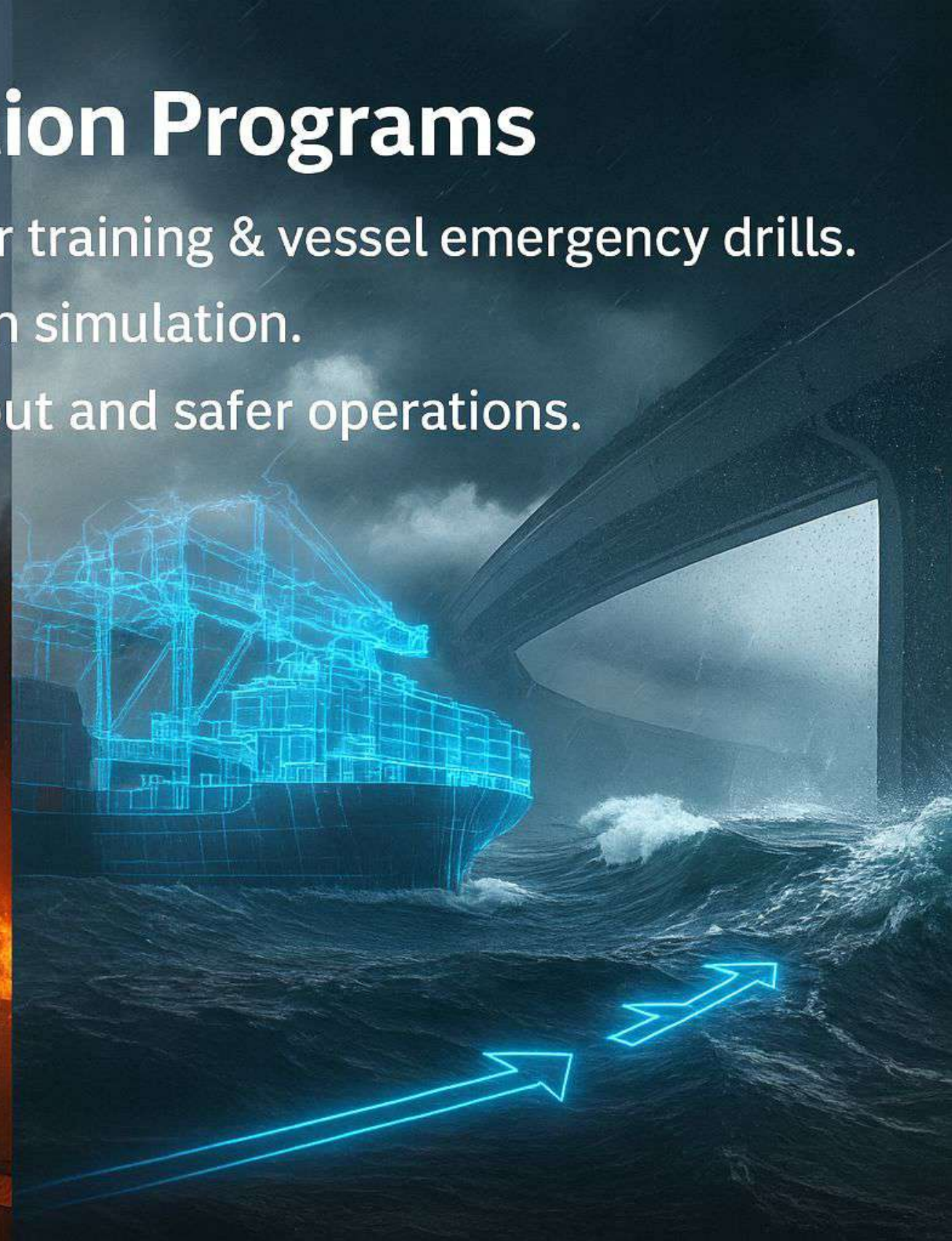
The Digital Port & Vessel Ecosystem

- Digital Twin vessels for realistic technical mastery.
- Virtual port simulations for cranes, trucks, and cargo handling.
- AI-powered MemoryVault capturing veteran expertise.
- Shared immersive emergency drills for entire crews



Priority Implementation Programs

- Phase 1: Port equipment operator training & vessel emergency drills.
- Phase 2: Engineering & navigation simulation.
- Fast ROI through faster throughput and safer operations.



ROI and Operational Impact

- Faster port operations = millions in saved vessel hours.
- Enhanced safety prevents billion-dollar incidents.
- Less equipment damage lowers repair and maintenance costs.
- Reduced training cost with scalable, remote solutions.



Call to Action: Securing Global Supply Chains

- Faster port operations is the lifeline of commerce.
- Status quo = bottlenecks, accidents, inefficiencies.
- Spatial AI delivers resilience, efficiency, and safety.

